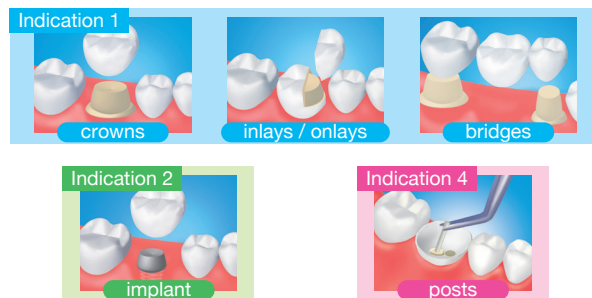




Indications for Use

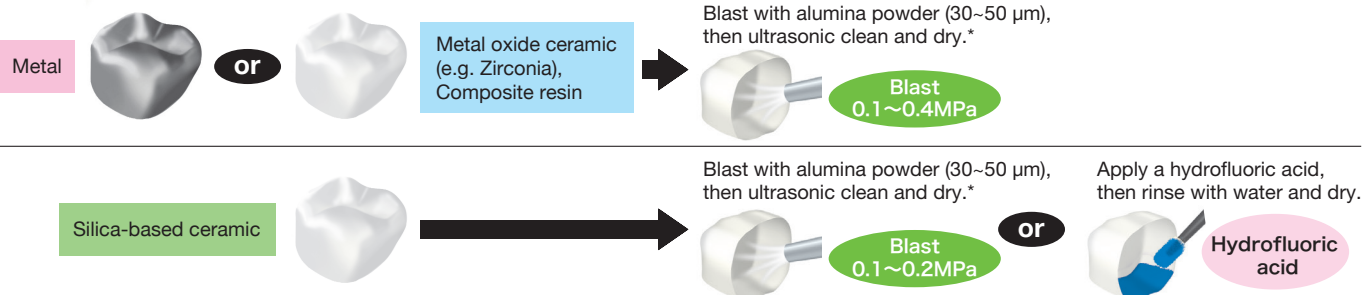
- [1] Cementation of crowns, bridges, inlays and onlays
- [2] Cementation of prosthetic restorations on implant abutments and frames*
- [3] Cementation of adhesion bridges and splints*
- [4] Cementation of posts and cores
- [5] Amalgam bonding*

* Refer to the IFU for [2], [3] and [5] of Indications.



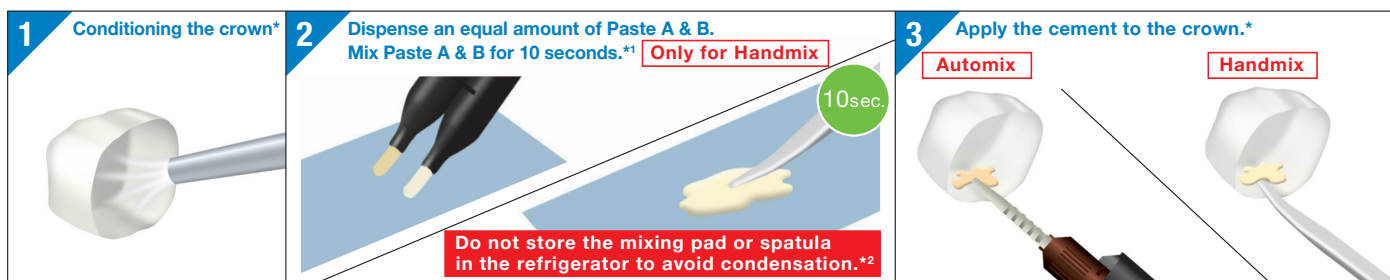
Conditioning the prosthetic restoration

Follow the Instructions for Use of the restoration material.
 In the absence of specific instructions, we recommend the following procedure:



Indication 1 Cementation of Crowns

Clean and dry the tooth surface, and then trial fit the prosthetic restoration.

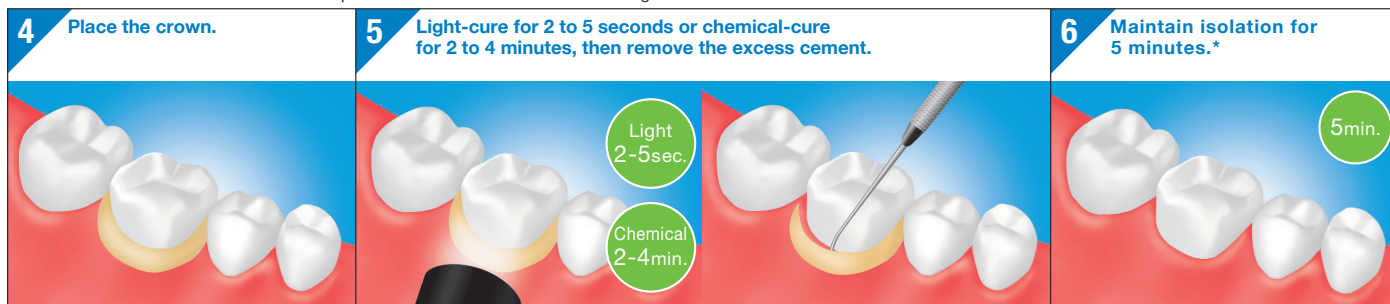


* Refer to "Conditioning the prosthetic restoration".

*1 Refer to table 1 for working time.

*2 The presence of water can shorten the working time.

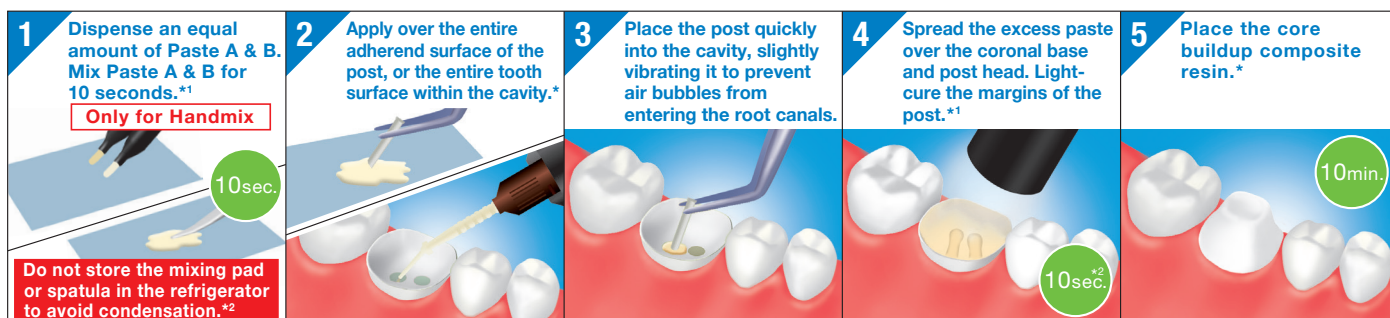
* Refer to table 1 for working time.



* For a translucent restoration, light-cure. Refer to table 2.

Indication 4 Cementation of Posts

Clean and dry the cavity, and then trial fit the post.



*1 Refer to table 1 for working time.

*2 The presence of water can shorten the working time.

* Refer to table 1 for working time.

*1 Refer to table 2.

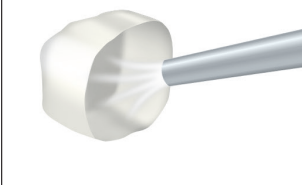
*2 BLUE LED (800-1400 mW/m²)

* Prepare the abutment tooth 10 minutes after placing the dental post.

Indication 1 Cementation of Crowns with CLEARFIL Universal Bond Quick (BOND)

Clean and dry the tooth surface, and then trial fit the prosthetic restoration.

1 Conditioning the crown*



* Refer to "Conditioning the prosthetic restoration".

2 Tooth Pretreatment

Choose either etching procedure

a. Self-etching (Move to section 3)

b. Selective-etching

Apply a phosphoric acid to the uncured and/or cut enamel, then rinse and dry.



c. Total-etching

Apply a phosphoric acid to the entire cavity, then rinse and dry.



3 Apply BOND with a rubbing motion

No waiting time



4 Dry by blowing mild air until BOND does not move*



* Use a vacuum aspirator to prevent BOND from scattering.

5 Dispense an equal amount of Paste A & B.

Mix Paste A & B for 10 seconds.*1

Only for Handmix



Do not store the mixing pad or spatula in the refrigerator to avoid condensation.*2

*1 Refer to table 1 for working time.

*2 The presence of water can shorten the working time.

6 Apply the cement to the crown.*

Automix

Handmix

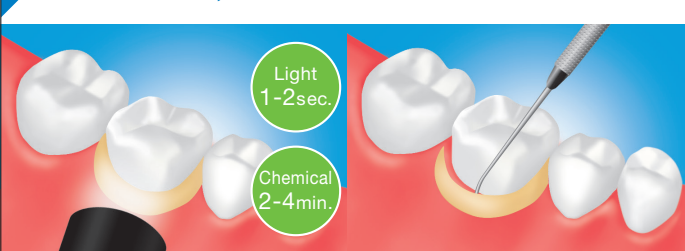


* Refer to table 1 for working time.

7 Place the crown.



8 Light-cure for 1 to 2 seconds or chemical-cure for 2 to 4 minutes, then remove the excess cement.



9 Maintain isolation for 5 minutes.*



* For a translucent restoration, light-cure. Refer to table 2.

Table 1 : Working time

Working time after mixing (23°C/ 73°F)	Automix	1 min.
	Handmix	2 min.
Working time after insertion of the paste into the cavity (37°C/ 99°F) (when used with CLEARFIL Universal Bond Quick)		40 sec. (30 sec.)

Table 2 : Curing time for type of light source

Type	Light source	Light Intensity	Curing time
High-intensity BLUE LED	BLUE LED	More than 1500 mW/cm ²	Twice for 3 to 5 sec.
BLUE LED		800-1400 mW/cm ²	10 sec.
Halogen	Halogen lamp	More than 400 mW/cm ²	10 sec.

* For the light intensity, refer to the IFU of the dental curing unit.